

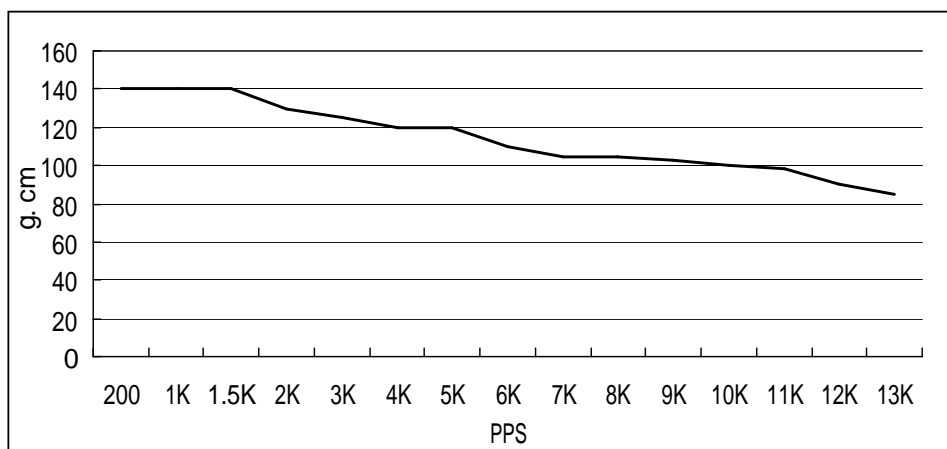
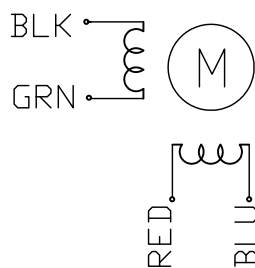
HIGH TORQUE HYBRID STEPPING MOTOR SPECIFICATIONS

| General specifications | | Electrical specifications | |
|----------------------------|------------------------------------|--|------------|
| Step Angle (°) | 1.8 | Rated Voltage (V) | 3.9 |
| Temperature Rise (°C) | 80 Max (rated current, 2 phase on) | Rated Current (A) | 0.6 |
| Ambient temperature (°C) | -20~+50 | Resistance Per Phase (±0%) | 6.5 (25°C) |
| Number of Phase | 2 | Inductance Per Phase (±20% _{mH}) | 1.7 |
| Insulation Resistance (MΩ) | 100 Min (500VDC) | Holding Torque (g.cm) | 180 |
| Insulation Class | Class B | Detent Torque (Kg.cm) | |
| Weight (Kg) | 0.08 | Rotor Inertia (g.cm ²) | 2.0 |

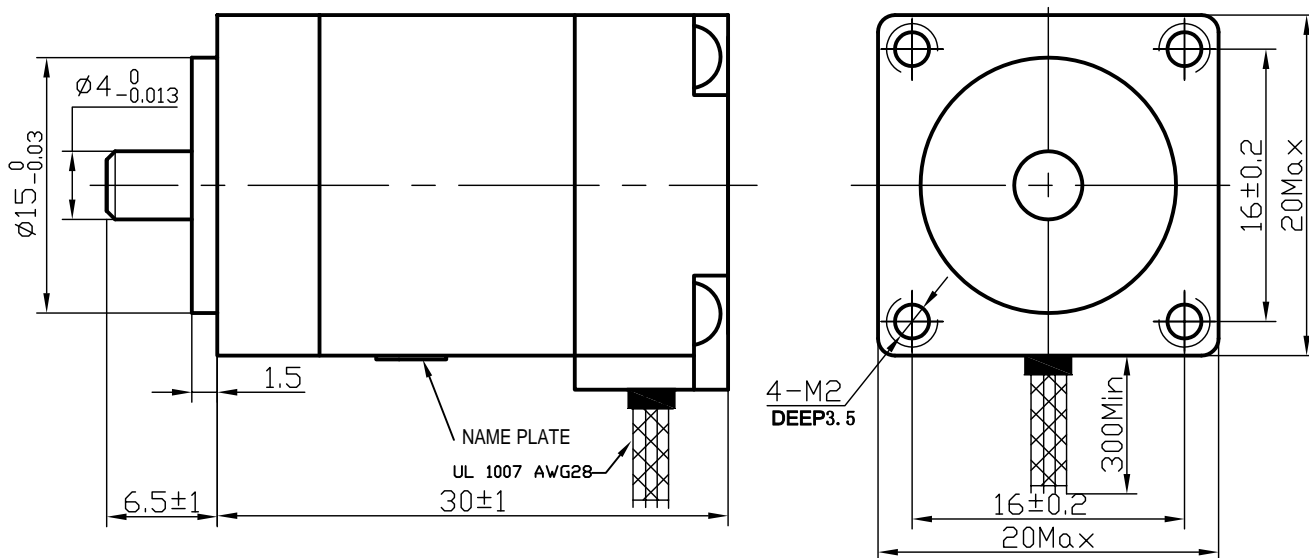
● Pull out torque curve:

VOLTAGE:24VDC, CONSTANT CURRENT:0.60A, HALF STEP

● Wiring Diagram:



● Dimensions:
(unit=mm)



| | | | | | | | |
|---------|-----------|-------------|----|------|---|----------------------|--|
| | | | | | SY20STH30-0604A | TECHNICAL CONDITIONS | |
| | | | | | | | |
| REV | REVISIONS | DESCRIPTION | BY | DATE | CHANGZHOU SONGYANG MACHINERY & ELECTRONICS NEW TECHNIC INSTITUTE | | |
| DRAW | 王凯 | | | | | | |
| CHECK | | | | | | | |
| APPROVE | | | | | | | |