

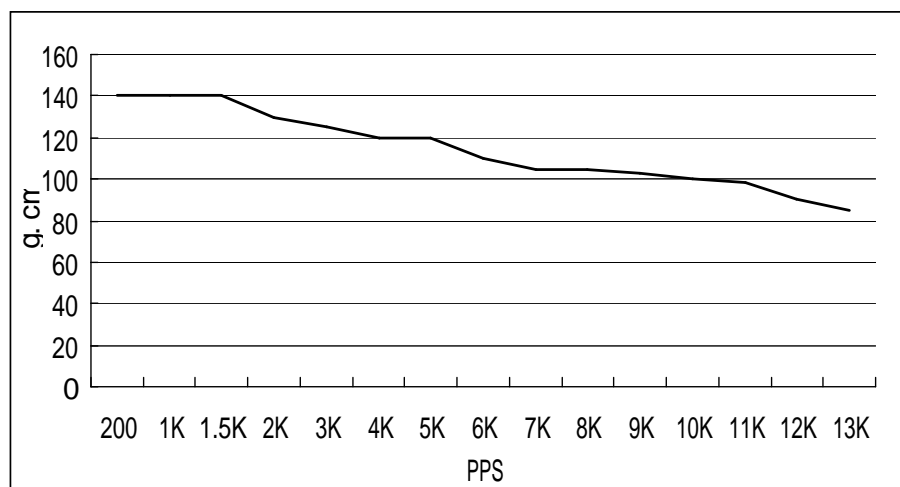
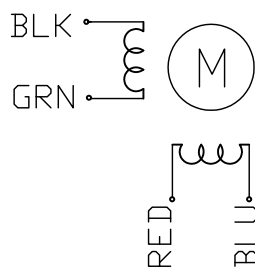
# HIGH TORQUE HYBRID STEPPING MOTOR SPECIFICATIONS

General specifications		Electrical specifications	
Step Angle (°)	1.8	Rated Voltage (V)	3.9
Temperature Rise (°C)	80 Max (rated current, 2 phase on)	Rated Current (A)	0.6
Ambient temperature (°C)	-20~+50	Resistance Per Phase(±0%)	6.5 (25°C)
Number of Phase	2	Inductance Per Phase (±20%)	1.7
Insulation Resistance (MΩ)	100 Min (500VDC)	Holding Torque (g.cm)	180
Insulation Class	Class B	Detent Torque (Kg.cm)	
Weight (Kg)	0.06	Rotor Inertia (g.cm <sup>2</sup> )	2.0

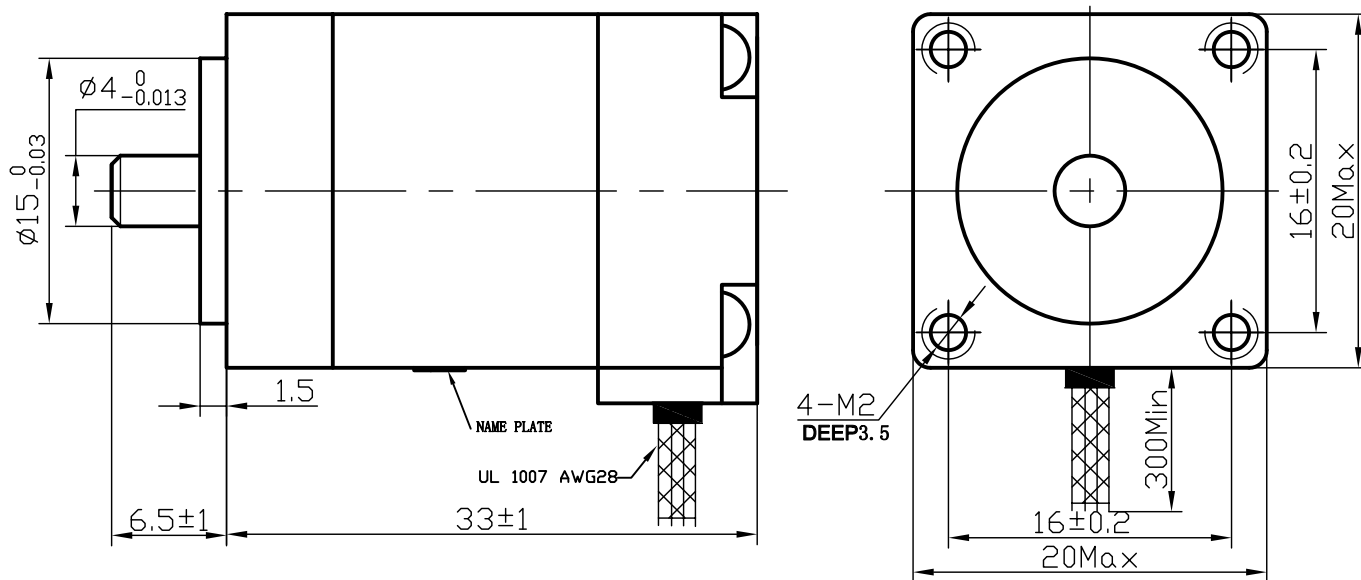
● Pull out torque curve:

VOLTAGE:24VDC, CONSTANT CURRENT:0.60A, HALF STEP

● Wiring Diagram:



● Dimensions: (unit=mm)



					SY20STH33-0604A	TECHNICAL CONDITIONS	
REV	REVISIONS	DESCRIPTION	BY	DATE	CHANGZHOU SONGYANG MACHINERY & ELECTRONICS NEW TECHNIC INSTITUTE		
DRAW	王凯						
CHECK							
APPROVE							